
Chapter 8

Adding and Editing Currencies

The COMPUSTAT (Global) database contains more than 110 different currencies used by companies to report their financial and market data. However, from time to time, you may want to use a currency that is not included in the Global database. This chapter explains how to add a new currency and translate data to and from any existing currency.

This chapter covers

- adding a new currency
- adding translation rate values
- editing translation rate values
- restoring translation rate data to its original form
- moving a currency to another database
- deleting a currency

Adding a New Currency

To add a new currency, begin from the Research Insight Desktop:

1. Make sure that COMPUSTAT (Global) is selected as the default database.
From the **Databases** menu, select **Default Database**.
2. In the Default Database Group dialog box, select **GLOBALVantage** from the drop-down list and click **OK**.
3. From the **Databases** menu, select **Currency** to open the Currency Definition dialog box.

The screenshot shows the 'Currency Definition' dialog box. The 'Key' field contains '.NEW' and the 'Name' field contains 'New Currency'. The 'Units of Representation' dropdown is set to 'Millions'. The 'Periodicity' dropdown is set to 'Annual' and the 'Period' dropdown is set to 'Y97'. The 'Database' field shows 'GV5USER'. On the right side, there are buttons for 'Accept', 'New Currency', 'Close', 'Look Up', 'Note...', 'Delete', 'Move...', 'View/Modify...', and 'Help'.

4. Enter a currency key (a three-letter code preceded by a period) in the **Key** field and press **Edit**. In this example, the currency key is **.NEW** for New Currency.
5. If your currency key does not already exist, Research Insight asks you if you want to add the currency to the write-to database. Click **OK**.
6. Enter the full name of the currency in the **Name** field. The name can be up to 28 characters long.
7. Select Millions or Billions from the **Units of Representation** drop-down list. Most currencies are listed in millions.

8. Select the current period (the most recent data available) for the new currency,

Use the **Period** and **Periodicity** fields together to select the current period for each reporting period used by Research Insight: annual, quarterly, monthly, weekly and daily. For example, if the latest annual reporting period for a company was December 2001, then for the annual Periodicity select the Period of Y01. If the latest quarterly reporting period for a company with a fiscal year ending in December is the first quarter of 2002, in the Periodicity field, select “quarterly”; in the Period field, select “Q1Y02”. To complete this step, select the current period for the monthly, weekly and daily periodicities.

9. To include a note about the new currency, click the **Note** button and enter some text in the Note field. Click **OK** to save the note.
10. To add the currency to the write-to database, click the **Accept** button.
Proceed to the next section to learn how to add currency translation rate values to the new currency.

Adding Currency Translation Rate Values

Currencies in the Global database are translated into one another using one of four Primary Currencies: British Pounds Sterling (.GBP), Swiss Franc (.CHF), Japanese Yen (.JPY) and United States Dollar (.USD).

In order to translate the new currency you added into another currency in the database, you first need to choose one of the four Primary Currencies, then add translation rate values from the new currency into the Primary Currency. The translation rate value is the number by which a data item is multiplied in order to be translated into a target currency.

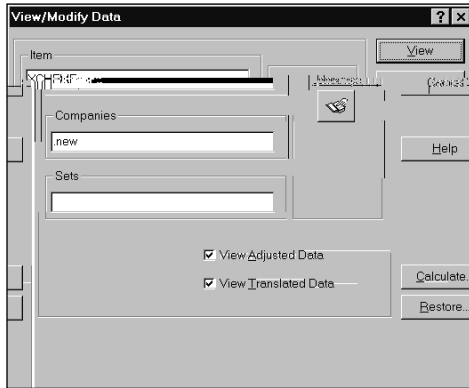
Research Insight uses three different translation rate values to translate different types of data items from a Primary Currency into the target currency. The example below shows the three translation rate data items for the Swiss Franc (CHF).

	Mnemonic	Description
Month Endrate	XCHFME	Translates point-in-time items, such as Balance Sheet items
Month Average rate	XCHFV	Translates some market items, such as monthly high and low prices
12-Month Moving Average rate	XCHF12	Translates Flow items, such as Income Statement or Statement of Changes items,

The following steps show you how to add translation rate values for the new currency.

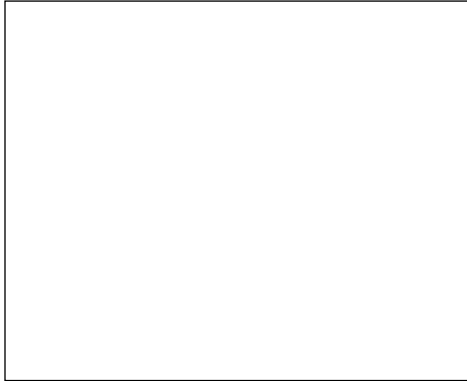
Begin from the Research Insight desktop:

1. From the **Databases** menu, select **View/Modify Data** to display the View/Modify Data dialog box.



2. Enter one of the translation rate items in the **Item** field for the Primary Currency you selected. For example, to add a Month End translation value from the new currency into the Swiss Franc, enter XCHFME in the Item text box.
3. Enter the currency key for the new currency in the **Companies** field. Be sure to include the period (.) before the currency key. In our example, we used **.NEW** for New Currency. You can use the **Look Up** list to identify all available currency keys.

4. Click **View** to display the Company Data dialog box.



5. Enter the translation rate values in the appropriate cells.
6. Click **Accept** when you are finished.
The new translation rate value is added to the write-to database.

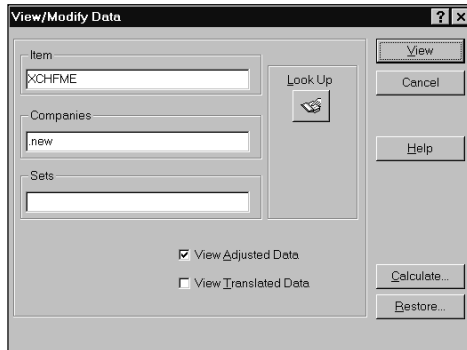
Note: Notice that your new data is highlighted. If you exit this dialog box and return to it later, an asterisk will appear next to the data value, identifying it as modified data.

7. Click **New Item** to return to the View/Modify Data dialog box.
8. Repeat steps 2-7 and add values for the Month Average translation rate from the new currency into the Swiss Franc (XCHFV) and for the 12-Month Moving Average rate (XCHF12).

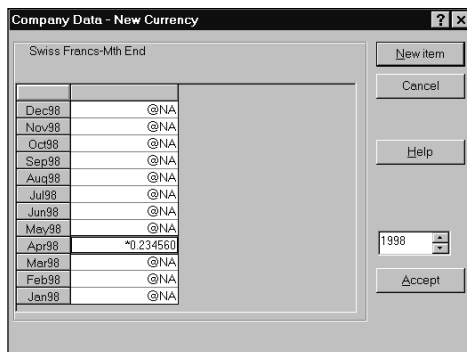
Editing Translation Rate Values

To change translation rate values for existing currencies, begin from the Research Insight desktop¹

1. From the **Databases** menu, select **View/Modify Data** to display the View/Modify Data dialog box.



2. Enter the mnemonic for the translation rate item you want to change in the **Item** field. For example, if you want to edit the translation rate for the Swiss Franc month-end rate, you would enter **XCHFME**.
3. Enter the currency key in the **Companies** field. For example, if you want to edit the translation rate for New Currency, you would enter **.NEW**.
4. Click **View** to open the Company Data dialog box. You will see an asterisk next to the data values you have added.



5. Enter the new information in the appropriate cell and click **Accept** to save your changes.

Restoring Translation Rate Data to Its Original Values

If you have changed the translation rate for an existing Research Insight currency, you can restore it to its original value or the value contained on the core database.

Begin from the Research Insight desktop:

1. From the **Databases** menu, select **View/Modify Data**.
The View/Modify Data dialog box appears.
2. Enter the translation rate item you want to restore in the **Item** field.
For example, if you want to restore the translation rate value for the Swiss Franc month-end rate, you would enter **XCHFME**.
3. Enter the currency key in the **Companies** field.
For example, if you want to restore the translation rate for a currency named New Currency, you would enter **.NEW**.
4. Click the **Restore** button.
The Restore dialog box appears.



5. Ensure that the **Selected Company/Set** radio button is selected.
6. Enter the time period(s) that you want to restore data for in the **From** and **To** fields.
For example, if you want to restore data for March of 1998, you would enter **Mar98** in the **From** field and **Mar98** in the **To** field.
7. Click the **Restore** button to restore the original values.

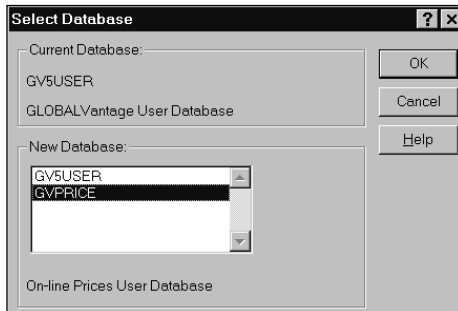
Moving a Currency to Another Database

When you create a new currency, Research Insight adds the data to the write-to database. This section shows you how to move currency data from one database to another. To learn more about creating and managing multiple databases, refer to Chapter 10 - Managing Your Databases.

Begin from the Research Insight desktop:

1. From the **Databases** menu, select **Currency**.
2. Enter the currency key in the **Key** field.
3. Click **Edit**, then click **Move**.

The Select Database dialog box appears.



4. Select the database where you want to move the currency from the New Database list box and click **OK**.
5. Click **Accept**.
6. Click **OK** to confirm that you want to move the currency. Research Insight moves the currency to the database you selected and clears the Currency Definition dialog box.

Deleting a Currency

You can delete currencies you have added; however, you cannot delete currencies that already exist in the Global database.

Begin from the Research Insight desktop:

1. From the **Databases** menu, select **Currency**.
The Currency Definition dialog box appears.
2. Enter the currency key for the currency you want to delete in the **Key** field and press **Enter**.
3. Click the **Delete** button.
4. Click **OK** to delete the currency and all associated data from the database.