

---

# Chapter 14

## COMPUSTAT (Classic)

---

### Overview

COMPUSTAT (Classic) is an as-reported historical database. By providing non-restated, quarterly COMPUSTAT data as it was originally collected by Standard & Poor's, COMPUSTAT (Classic) offers you the ability to filter out both the influences of restated data and backfilled data from company additions. This database allows you to look at as-reported data, as it was originally presented, at any point in time.

This chapter gives you detailed information about:

- Downloading Classic data from the Internet
- Viewing COMPUSTAT (Classic) data in Research Insight
- Working with Classic data in Research Insight

## Downloading COMPUSTAT (Classic) Data from the Internet

You can schedule an automatic download of COMPUSTAT (Classic) data from the Internet using the Research Insight Task Scheduler. **Note:** You must download Classic data once a month to get the most current file.

To schedule a download, begin from the Research Insight desktop:

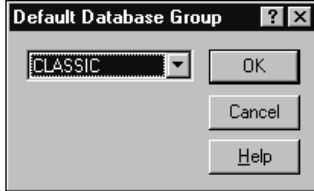
1. From the **Tools** menu, select **Task Scheduler** to display the Task Scheduler dialog box.
2. Click the **New Task** button to display the New Schedule Entry dialog box.
3. Select the **Internet Download** radio button and click **OK**.  
The Schedule Internet Download dialog box appears.
4. Select **Compustat Classic** from the File Types area.

The screenshot shows the 'Schedule Internet Download' dialog box. It has a title bar with a question mark and a close button. The 'File Types' section contains several options: 'Daily Prices' (unchecked), 'Fundamentals' (unchecked), 'Value-Added Data' (unchecked), 'First Call Consensus' (unchecked), 'First Call Revisions' (unchecked), 'Compustat Classic' (checked), and 'EVAntage' (unchecked). Each option has a 'Number of Days' or 'All Days Needed' field, and 'Compustat Classic' has radio buttons for 'Full' (selected) and 'Differences'. The 'Schedule' section has radio buttons for 'Now' (selected), 'One Time', and 'Periodically'. Below the 'Now' radio button are fields for 'Time' (02:04 pm), 'Date' (03/12/02), and a frequency dropdown menu (Daily). On the right side of the dialog box are buttons for 'OK', 'Cancel', 'Help', and 'Settings'.

5. Select when you want the file downloaded using the radio buttons in the Schedule area.  
**Now** - The file will be downloaded as soon as you close the Task Scheduler.  
**One Time** - Select the time and date in the fields at the bottom of the dialog box.  
**Periodically** - Select the time of day, start date and frequency (daily/weekly/monthly) in the fields at the bottom of the dialog box.
  6. Click **OK**.  
You return to the Task Scheduler dialog box. The download you just scheduled appears in alphabetical order in the list of Scheduled Tasks.
  7. When you are finished scheduling downloads, close the Task Scheduler dialog box.
- Important:** In order to download data, Research Insight must be running.

## Working with Classic Data in Research Insight

If you want Research Insight to return Classic data values every time you use quarterly items in your screens, reports and charts, change the default database to Classic. From the **Databases** menu, select **Default Database**, then select **Classic** from the drop-down list.



When you select Classic as the default database, Research Insight searches for a data item value in the Classic database first. For example, both the Classic and the COMPUSTAT databases contain a value for Sales - Net Quarterly (SALEQ), but when Classic is selected as the active database, Research Insight will find the value for SALEQ in Classic, and the value for that item in the COMPUSTAT database will be blocked from view. See Chapter 10, Managing Your Databases, for further information on working with database layers and groups.

### Use Functions to Target or Exclude Specific Database Layers

The **@DB function** allows you to return a formula from a specific layer of the active database group, even if you are working in another database, such as Classic. We recommend you use this function to target the COMPUSTATDB database layer, and include an absolute time period reference in the function.

#### Example:

Function:	@DB(database group layer,formula)
Function with argument:	@DB(compustatdb,sale[Y01])
What it does:	Returns the value for net sales from the COMPUSTAT database for 2001.

The **@EXCLUDEDB function** returns the formula from the first database layer where it is found, excluding the specified layer. Use this function when you're not sure in which database layer the data you want to retrieve is contained. We recommend you include a time reference and use this function to exclude either CS5USER, CLASSIC or CSPRICE from your search rather than excluding the COMPUSTATDB core database.

#### Example:

Function:	@EXCLUDEDB(database group layer,formula)
Function with argument:	@EXCLUDEDB(classic,gpmq[q2y01])
What it does:	Returns the quarterly gross profit margin for the second quarter of 2001 from the first database layer it is found in, excluding the Classic database