

---

# Chapter 1

## Getting Started

---

### **Standard & Poor's Research Insight® and the COMPUSTAT® (Global) Database**

Standard & Poor's Research Insight and the COMPUSTAT (Global) database offer a world-class research solution for analyzing the global marketplace. Our powerful, easy-to-use software places a wealth of reliable financial data and insightful company reports, performance graphs and textual documents at your fingertips – giving you the perspective you need to determine a company's true value and to identify worldwide buy/sell opportunities well before your competition.

The COMPUSTAT (Global) database provides:

- In-depth financial and market data on more than 12,000 active and inactive companies in more than 70 countries around the world
- Complete histories including income statements, balance sheets and market data
- Currency files with cross-translation tables for more than 110 currencies
  - Monthly pricing data on more than 90 local market indexes
  - Up to 12 years of historic data

This chapter:

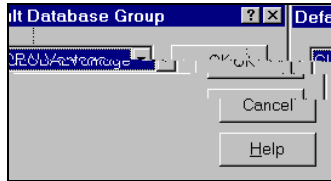
- Shows you how to select the COMPUSTAT (Global) database as your default database
- Shows you how to choose or change your default styles.
- Introduces useful terms used throughout the Global database
- Describes additional resources for working with the Global database

## Selecting the COMPUSTAT (Global) Database

Research Insight gives you the option of accessing either the COMPUSTAT (Global) database or the COMPUSTAT (North America) database, depending on the subscription you have purchased. If you subscribe to a single database (e.g. COMPUSTAT (Global)), your default database is selected automatically. If you subscribe to both databases, here are the steps you should follow when you want to use COMPUSTAT (Global) as your default database:

Begin from the Research Insight desktop:

1. Click **Databases**.
2. From the drop-down menu, click **Default Database**.



3. Click **GLOBAL**.
4. Click **OK**.

The COMPUSTAT (Global) database is now your default database. Any applications you run during this session will use data from the Global database.

## Useful Terms

The following terms are specific to the COMPUSTAT (Global) database. Knowing them makes it easier to navigate through Research Insight:

**GVKEY:** The COMPUSTAT (Global) company key. A retrieval key similar to a ticker symbol used to identify companies in the COMPUSTAT (North America) database.

**Primary Currency:** A currency you select to facilitate a translation into another currency when no direct translation rate exists.

**Target Currency:** The currency in which you want Research Insight to display data for screens, reports and other operations.

**ISO currency code:** A code Research Insight uses to identify currencies.

**ISO country code:** A code Research Insight uses to identify countries.

## Choosing or Changing Styles

During your initial installation of Research Insight, the styles you may choose from include Money Management, Credit, Corporate Finance and Transfer Pricing. You can, however, change your default setting anytime you are working in the software. You can also customize your indicator groups and items to include other indicators, or you can create new indicators to meet your specific needs.

The Money Management setting defaults to the Indicator Groups (i.e. Valuation, Fundamentals, Market, etc.) and Indicator Items (i.e. Issue Market Value, Sales, Price-Monthly, etc.) most commonly used by Money Managers.

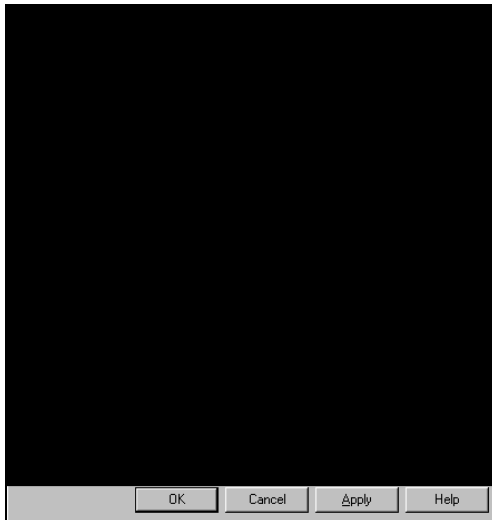
The Credit setting defaults to the Indicator Groups (i.e. Fundamentals, Debt Coverage Ratios, Activity Ratios, etc.) and Indicator Items (i.e. Revenues-Total, LTD to Total Cap, Total Asset Turnover, etc.) most commonly used by Credit Mattingers.

The Corporate Finance setting defaults to the Indicator Groups (i.e. Company Specifics, EBITDA, Growth, etc.) and Indicator Items (i.e. Economic Sector Code, EBIT Margin, Sales 5Yr CAGR, etc.) most commonly used by Corporate Finance clients.

The Tr  
N-Tiles, Fractiles Ratios, etc.) and Indicator Items (i.e. Revenue-Total, Relative Gross Profit Margin, Inter-Decile Sales, etc.) most commonly used by Transfer Pricing clients.

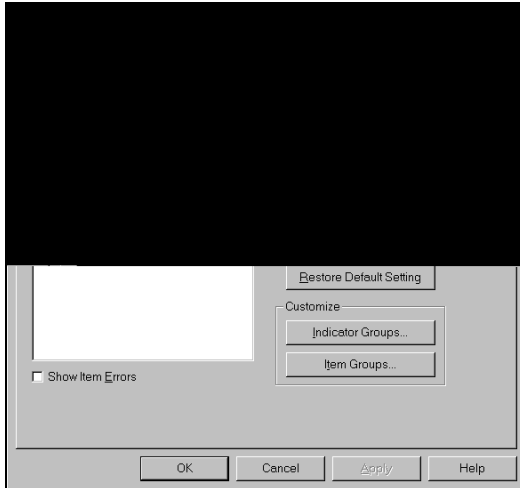
To change your default setting after you have installed Research Insight, begin by closing the Welcome to Research Insight window. From the **Tools** menu, select **Options**.

You will see the Options dialog box.



## Choosing Default Styles

Click the **Styles** tab, highlight the default option you prefer and click **Set Active Style**. You can also change a style name, create a copy of a style, create a new style, delete a style or restore the styles to the default settings.



## Helpful Resources

This guide will give you the basic information you need to begin using Research Insight with COMPUSTAT (Global) data. Another resource to consider is the extensive on-line help system built into Research Insight. Within on-line help you will find step-by-step instructions for every powerful feature Research Insight performs, as well as detailed definitions for every item in the COMPUSTAT (Global) database. Where applicable, these definitions include both industry- and country-specific information.

Visit our website at [www.compustat.com](http://www.compustat.com) for information on Standard & Poor's *Compustat* products.

Assistance is also available from the Standard & Poor's *Compustat* Customer Support department. U.S. and Canadian clients can call toll free **(800) 523-4534** between 9:00 a.m. and 8:00 p.m. Eastern Standard Time, Monday through Friday. The Fax number is **(303) 721-4432**.

International clients can call **+44 181 543-2555** between 9:00 a.m. and 5:30 p.m. GMT. The Fax number is **+44 181 545-6292**.