

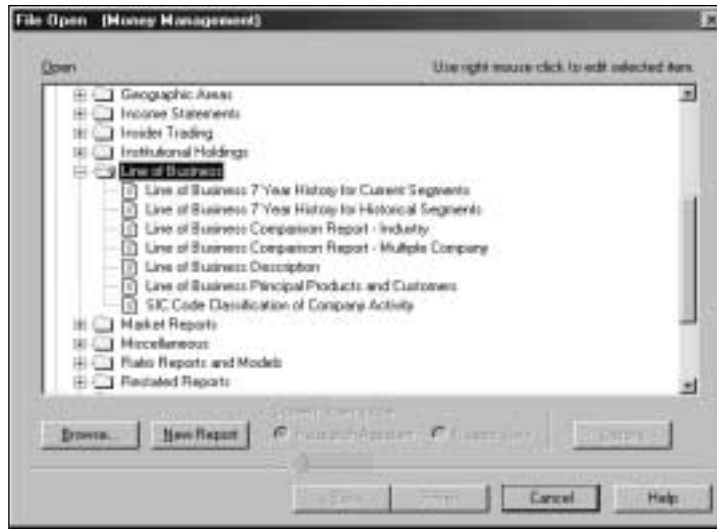
## Reports in the Line of Business Folder

### Report Name

Line of Business - 7 Year History for Current Segments  
Line of Business - 7 Year History for Historical Segments  
Line of Business Comparison Report - Industry  
Line of Business Comparison Report - Multiple Company  
Line of Business Description  
Line of Business Principal Products and Customers  
SIC Code Classification of Company Activity

### Report File Name

CSEGHIST  
CSEG7YR  
CMKTSHR  
CSEGCMPR  
CSEG  
CSEGPROD  
CSICALL



## Line of Business - 7 Year History for Current Segments (CSEGHIST)

### Description

This report presents up to seven years of business segment data for a single company. The segments presented in this report are those for which segment sales are available in the period you specify. The default is to display history for segments in the current period.

HISTORICAL BUSINESS SEGMENT REPORT														
7 Current Segment(s) for the year ended Dec99														
DOW CHEMICAL														
TICKER: DOW														
SIC: 2821 PLASTICS,RESINS,ELASTOMERS														
GICS: 15101020 Diversified Chemicals														
	Dec99		Dec98		Dec97		Dec96		Dec95		Dec94		Dec93	
Segment Name:	% Of Total		% Of Total		% Of Total		% Of Total		% Of Total		% Of Total		% Of Total	
<b>Segment Name:</b> Hydrocarbons and Enetgy														
<b>SIC Codes:</b> 2824 2865														
Sales	1,644.000	9	1,479.000	8	2,164.000	11	2,442.000	12	2,371.000	12	2,043.000	14	1,797.000	14
Operating Income	-5.000	-0	-5.000	-0	-40.000	-1	-57.000	-2	-83.000	-2	74.000	3	43.000	3
Assets	1,701.000	7	1,849.000	8	2,149.000	10	3,308.000	16	2,743.000	16	3,455.000	16	3,210.000	15
Capital Expenditures	259.000	18	170.000	11	179.000	15	362.000	27	342.000	24	408.000	34	436.000	31
Depreciation	96.000	7	97.000	7	139.000	12	153.000	12	104.000	8	259.000	20	298.000	22
<b>Segment Name:</b> Chemicals														
<b>SIC Codes:</b> 2812 2869														
Sales	2,329.000	12	2,385.000	13	2,924.000	15	3,123.000	16	3,322.000	16	@NA	@NA	@NA	@NA
Operating Income	424.000	17	193.000	8	629.000	23	737.000	24	1,136.000	29	@NA	@NA	@NA	@NA
Assets	2,322.000	9	2,448.000	10	2,658.000	12	2,878.000	14	2,660.000	15	@NA	@NA	@NA	@NA
Capital Expenditures	307.000	22	328.000	21	245.000	20	319.000	24	516.000	36	@NA	@NA	@NA	@NA
Depreciation	209.000	16	239.000	18	216.000	18	227.000	18	280.000	20	@NA	@NA	@NA	@NA
<b>Segment Name:</b> Plastics														
<b>SIC Codes:</b> 2821 @NA														
Sales	4,417.000	23	3,779.000	20	4,126.000	21	3,862.000	19	3,932.000	19	@NA	@NA	@NA	@NA
Operating Income	636.000	26	607.000	26	845.000	31	794.000	26	1,475.000	38	@NA	@NA	@NA	@NA
Assets	4,602.000	18	3,922.000	16	3,270.000	15	3,437.000	17	3,422.000	19	@NA	@NA	@NA	@NA
Capital Expenditures	230.000	16	339.000	22	156.000	13	114.000	8	81.000	6	@NA	@NA	@NA	@NA
Depreciation	305.000	23	248.000	19	241.000	20	255.000	20	327.000	24	@NA	@NA	@NA	@NA
<b>Segment Name:</b> Performance Plastics														
<b>SIC Codes:</b> 2821 2891														
Sales	5,247.000	28	5,076.000	28	5,251.000	26	5,337.000	27	5,369.000	27	@NA	@NA	@NA	@NA
Operating Income	1,052.000	42	1,089.000	46	922.000	34	1,167.000	38	1,056.000	27	@NA	@NA	@NA	@NA
Assets	4,354.000	17	4,501.000	19	5,141.000	24	5,212.000	25	3,962.000	23	@NA	@NA	@NA	@NA
Capital Expenditures	311.000	22	368.000	24	358.000	30	266.000	20	175.000	12	@NA	@NA	@NA	@NA
Depreciation	307.000	24	303.000	23	292.000	24	294.000	23	294.000	21	@NA	@NA	@NA	@NA
<b>Segment Name:</b> Unallocated and Other														
<b>SIC Codes:</b> 6794 @NA														
Sales	329.000	2	731.000	4	962.000	5	1,065.000	5	966.000	5	@NA	@NA	@NA	@NA
Operating Income	-256.000	-10	264.000	11	-265.000	-10	-275.000	-9	-363.000	-9	@NA	@NA	@NA	@NA
Assets	6,577.000	26	4,995.000	21	3,688.000	17	1,474.000	7	717.000	4	@NA	@NA	@NA	@NA
Capital Expenditures	5.000	0	49.000	3	39.000	3	42.000	3	29.000	2	@NA	@NA	@NA	@NA
Depreciation	32.000	2	54.000	4	37.000	3	46.000	4	44.000	3	@NA	@NA	@NA	@NA
<b>Segment Name:</b> Agricultural Products														
<b>SIC Codes:</b> 2879 @NA														
Sales	2,273.000	12	2,352.000	13	@NA	@NA	@NA	@NA	@NA	@NA	@NA	@NA	@NA	@NA
Operating Income	125.000	5	-209.000	-9	@NA	@NA	@NA	@NA	@NA	@NA	@NA	@NA	@NA	@NA
Assets	3,346.000	13	3,938.000	17	@NA	@NA	@NA	@NA	@NA	@NA	@NA	@NA	@NA	@NA
Capital Expenditures	122.000	9	129.000	8	@NA	@NA	@NA	@NA	@NA	@NA	@NA	@NA	@NA	@NA
Depreciation	190.000	15	196.000	15	@NA	@NA	@NA	@NA	@NA	@NA	@NA	@NA	@NA	@NA

DOW CHEMICAL

	Dec99		Dec98		Dec97		Dec96		Dec95		Dec94		Dec93	
<b>Segment Name:</b>	Performance Chemicals													
<b>SIC Codes:</b>	2869 2822													
		<b>% Of</b>		<b>% Of</b>		<b>% Of</b>		<b>% Of</b>		<b>% Of</b>		<b>% Of</b>		<b>% Of</b>
		<b>Total</b>		<b>Total</b>		<b>Total</b>		<b>Total</b>		<b>Total</b>		<b>Total</b>		<b>Total</b>
Sales	2,690,000	14	2,639,000	14	@NA	@NA	@NA	@NA	@NA	@NA	@NA	@NA	@NA	@NA
Operating Income	500,000	20	427,000	18	@NA	@NA	@NA	@NA	@NA	@NA	@NA	@NA	@NA	@NA
Assets	2,597,000	10	2,177,000	9	@NA	@NA	@NA	@NA	@NA	@NA	@NA	@NA	@NA	@NA
Capital Expenditures	178,000	13	163,000	11	@NA	@NA	@NA	@NA	@NA	@NA	@NA	@NA	@NA	@NA
Depreciation	162,000	12	168,000	13	@NA	@NA	@NA	@NA	@NA	@NA	@NA	@NA	@NA	@NA

## Line of Business - 7 Year History for Historical Segments (CSEG7YR)

### Description

This report presents up to seven years of business segment data for a single company. The segments presented in this report are those reported in each year.

7 YEAR SEGMENT HISTORY													
DISNEY (WALT) COMPANY													
TICKER: DIS													
SIC: 4833 TELEVISION BROADCAST STATION													
GICS: 25401030 Movies & Entertainment													
ID	Segment Name	SIC1	SIC2	Sales	% Of Total	Op Inc	% Of Total	Assets	% Of Total	Cap Exp	% Of Total	Depr	% Of Total
<b>Sep99</b>													
01	Theme Parks and Resorts	7996	7011	6,106.0	26	1,446.0	39	10,272.0	24	1,758.0	82	519.0	40
05	Media Networks	4833	4841	7,512.0	32	1,611.0	44	19,326.0	44	159.0	7	554.0	42
10	Studio Entertainment	7812	7922	6,548.0	28	116.0	3	7,865.0	18	51.0	2	65.0	5
11	Consumer Products	6794	@NA	3,030.0	13	607.0	16	1,964.0	4	106.0	5	130.0	10
12	Internet and Direct Marketin	5961	7375	206.0	1	-93.0	-3	214.0	0	17.0	1	13.0	1
13	Corporate	4833	@NA	0.0	0	0.0	0	4,038.0	9	43.0	2	26.0	2
<b>Totals:</b>				23,402.0	100	3,687.0	100	43,679.0	100	2,134.0	100	1,307.0	100
<b>Sep98</b>													
01	Theme Parks and Resorts	7996	7011	5,532.0	24	1,287.0	32	9,214.0	24	1,693.0	78	444.0	57
04	CREATIVE CONTENT	7812	6794	10,302.0	45	1,403.0	35	9,509.0	24	221.0	10	209.0	27
05	Media Networks	4833	4832	7,142.0	31	1,325.0	33	20,099.0	52	245.0	11	122.0	16
<b>Totals:</b>				22,976.0	100	4,015.0	100	38,822.0	100	2,159.0	100	775.0	100
<b>Sep97</b>													
01	Theme Parks and Resorts	7996	7011	5,014.0	22	1,136.0	26	8,051.0	22	1,266.0	74	408.0	58
04	CREATIVE CONTENT	7812	6794	10,937.0	49	1,882.0	44	8,832.0	25	301.0	18	187.0	27
05	Media Networks	4833	4832	6,522.0	29	1,294.0	30	19,036.0	53	152.0	9	104.0	15
<b>Totals:</b>				22,473.0	100	4,312.0	100	35,919.0	100	1,719.0	100	699.0	100
<b>Sep96</b>													
01	Theme Parks and Resorts	7996	7011	4,502.0	24	990.0	30	7,066.0	20	1,196.0	72	358.0	57
04	CREATIVE CONTENT	7812	6794	10,095.0	54	1,596.0	48	8,837.0	24	359.0	22	163.0	26
05	Media Networks	4833	4832	4,142.0	22	747.0	22	20,256.0	56	113.0	7	109.0	17
<b>Totals:</b>				18,739.0	100	3,333.0	100	36,159.0	100	1,668.0	100	630.0	100

## DISNEY (WALT) COMPANY

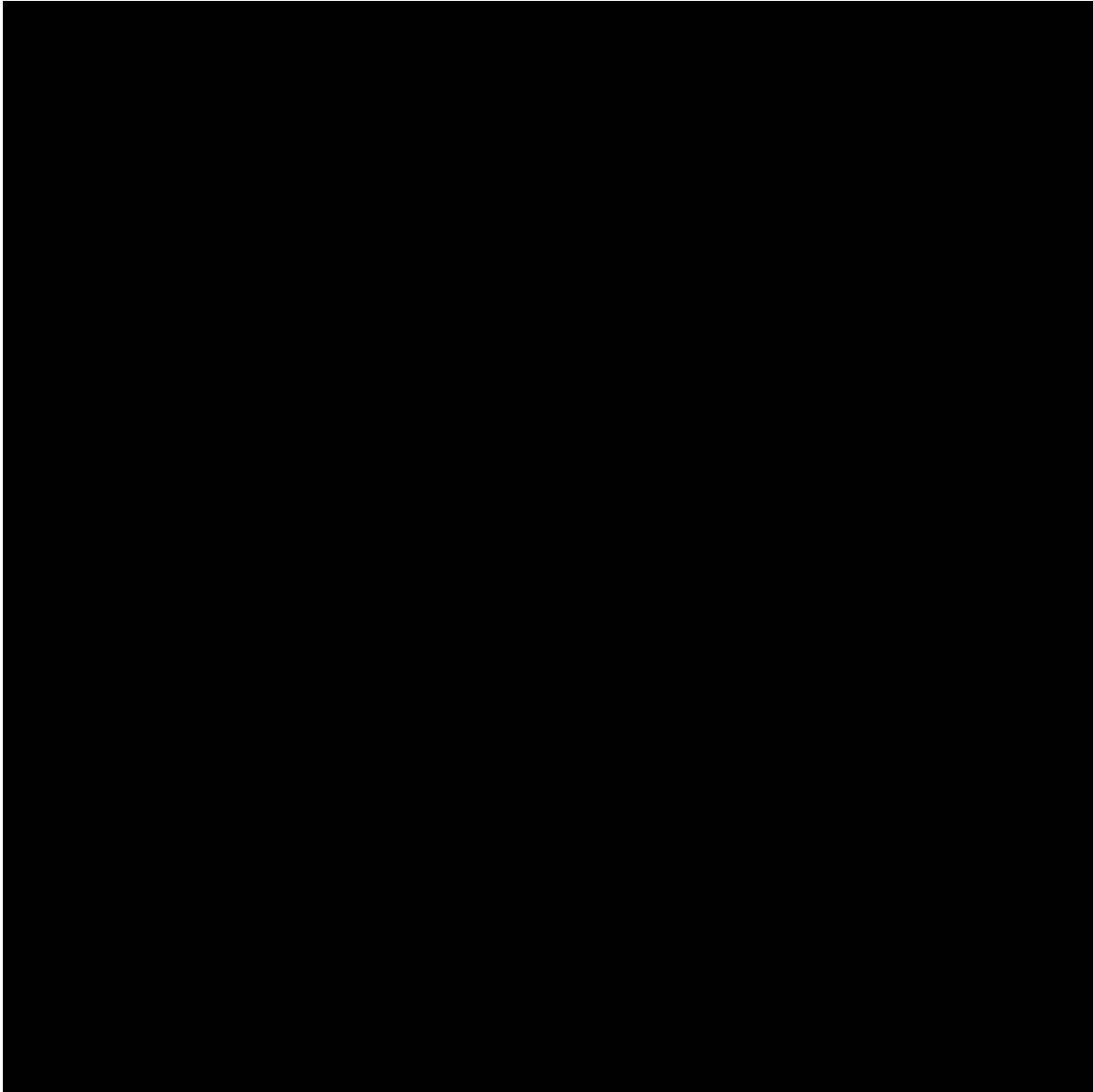
TICKER: DIS

SIC: 4833 TELEVISION BROADCAST STATION

GICS: 25401030 Movies &amp; Entertainment

ID	Segment Name	SIC1	SIC2	Sales	% Of Total	Op Inc	% Of Total	Assets	% Of Total	Cap Exp	% Of Total	Depr	% Of Total
<b>Sep95</b>													
01	Theme Parks and Resorts	7996	7011	3,959.8	33	860.8	35	6,073.9	51	635.5	73	319.5	74
02	FILMED ENTERTAINMENT	7812	4833	6,001.5	50	1,074.4	44	4,834.2	41	125.0	14	61.6	14
06	OTHER	6794	3652	2,150.8	18	510.5	21	962.0	8	115.4	13	52.2	12
<b>Totals:</b>				12,112.1	100	2,445.7	100	11,870.1	100	875.9	100	433.3	100
<b>Sep94</b>													
01	Theme Parks and Resorts	7996	7011	3,463.6	34	684.1	35	5,706.9	55	846.4	84	289.2	77
02	FILMED ENTERTAINMENT	7812	4833	4,793.3	48	856.1	44	3,791.5	37	100.7	10	49.1	13
06	OTHER	6794	3652	1,798.2	18	425.5	22	845.3	8	61.1	6	38.3	10
<b>Totals:</b>				10,055.1	100	1,965.7	100	10,343.7	100	1,008.2	100	376.6	100
<b>Sep93</b>													
01	Theme Parks and Resorts	7996	7011	3,440.7	40	746.9	43	5,216.0	56	593.4	78	269.2	81
02	FILMED ENTERTAINMENT	7812	4833	3,673.4	43	622.2	36	3,417.5	37	130.2	17	38.5	12
06	OTHER	6794	3652	1,415.1	17	355.4	21	707.5	8	36.3	5	26.2	8
<b>Totals:</b>				8,529.2	100	1,724.5	100	9,341.0	100	759.9	100	333.9	100

## Line of Business Comparison Report - Industry (CMKTSHR)



Seg SIC2	Secondary SEC Code Description	Segment Sales	Tot Company Sales	Seg Sales As% Total	Seg Sales As % Group
@NA		@NA	1,775.26	@NA	@NA
@NA		@NA	1,775.26	@NA	@NA
2099	FOOD PREPARATIONS, NEC	444.204	1,775.26	25.02	2.017
3842	ORTHO,PROSTH,SURG APPL,SUPLY	466.53	1,775.26	26.28	2.118
@NA		879.209	1,775.26	49.53	3.991
@NA		@NA	1,775.26	@NA	@NA
5122	DRUGS AND PROPRIETARY-WHSL	24.701	24.701	100	0.112
6794	PATENT OWNERS AND LESSORS	11.621	11.621	100	0.053
8742	MANAGEMENT CONSULTING SVCS	5.922	5.922	100	0.027
5963	DIRECT SELLING ESTABLISHMENT	4,814.20	4,814.20	100	21.856
@NA		@NA	4,814.20	@NA	@NA
@NA		3.745	3.745	100	0.017
@NA		@NA	69.421	@NA	@NA
3843	DENTAL EQUIPMENT & SUPPLIES	621.103	862.471	72.01	2.82
2842	SPECIAL CLEAN,POLISH PREPS	241.368	862.471	27.99	1.096
@NA		@NA	862.471	@NA	@NA
2841	SOAP AND OTHER DETERGENTS	441.052	441.052	100	2.002
@NA		59.938	59.938	100	0.272
@NA		111.923	651.955	17.17	0.508
2835	IN VITRO,IN VIVO DIAGNOSTICS	243.163	651.955	37.3	1.104
2844	PERFUME,COSMETIC,TOILET PREP	293.669	651.955	45.04	1.333
@NA		@NA	37.709	@NA	@NA
2841	SOAP AND OTHER DETERGENTS	7,860.30	8,749.00	90.07	35.775
@NA		868.7	8,749.00	9.93	3.944
3421	CUTLERY	179.031	232.951	76.85	0.813
@NA		53.92	232.951	23.15	0.245
5122	DRUGS AND PROPRIETARY-WHSL	115.034	0	@NC	0
@NA		20.323	20.323	100	0.092
6794	PATENT OWNERS AND LESSORS	1.318	1.318	100	0.006
5122	DRUGS AND PROPRIETARY-WHSL	140.482	140.482	100	0.638
5122	DRUGS AND PROPRIETARY-WHSL	200.917	200.917	100	0.912
6794	PATENT OWNERS AND LESSORS	0.585	0.585	100	0.003
3843	DENTAL EQUIPMENT & SUPPLIES	8.113	8.113	100	0.037
5122	DRUGS AND PROPRIETARY-WHSL	93.281	93.281	100	0.423
@NA		117.083	117.083	100	0.532
@NA		3,381.60	3,381.60	100	15.352
3843	DENTAL EQUIPMENT & SUPPLIES	8.815	8.815	100	0.04
@NA		87.64	87.64	100	0.398
@NA		@NA	2,390.90	@NA	@NA
@NA		@NA	2,390.90	@NA	@NA
@NA		@NA	44.144	@NA	@NA
@NA		@NA	44.144	@NA	@NA
2842	SPECIAL CLEAN,POLISH PREPS	44.144	44.144	100	0.2
@NA		@NA	44.144	@NA	@NA
8731	COML PHYSICAL, BIOLOGCL RESH	0.499	6.486	7.69	0.002
@NA		5.987	6.486	92.31	0.027
@NA		@NA	@NA	@NA	@NA
@NA		@NA	@NA	@NA	@NA
@NA		@NA	@NA	@NA	@NA
5961	CATALOG, MAIL-ORDER HOUSES	25.779	25.779	100	0.117
3634	ELECTRIC HOUSEWARES AND FANS	@NA	@NA	@NA	@NA
7299	MISC PERSONAL SERVICES, NEC	45.233	45.233	100	0.205
5122	DRUGS AND PROPRIETARY-WHSL	68.959	68.959	100	0.313
@NA		13.172	15.18	86.77	0.06
@NA		@NA	15.18	@NA	@NA
@NA		4.034	15.18	26.57	0.018
Sum:		22,027.29	52,773.29	3,013.68	100

## Line of Business Comparison Report - Multiple Company (CSEGCMPR)

### Description

This report compares the business segment data of four companies for a single year. The segments presented in this report are those for which segment are available in the period you specify. The default is to display data for segments reported in the current period of each comparison company.

<b>EXXON MOBIL CORP</b> TICKER: XOM SIC: 2911 Period Ended: Dec99				<b>TEXACO INC</b> TICKER: TX SIC: 2911 Period Ended: Dec99			
<b>SEGMENT NAME:</b> U S Exploration & Production <b>SIC CODES:</b> 1311 1321				<b>SEGMENT NAME:</b> United States Exploration <b>SIC CODES:</b> 1311 1321			
		<b>% OF</b>	<b>% OF</b>	<b>% OF</b>	<b>% OF</b>	<b>% OF</b>	
		<b>TOTAL</b>	<b>SALES</b>	<b>ASSETS</b>	<b>TOTAL</b>	<b>SALES</b>	
Sales	3,104.000	2	100	17	Sales	3,713.000	
Operating Income	1,842.000	23	59	10	Operating Income	652.000	
Assets	18,211.000	13	587	100	Assets	8,696.000	
Capital Expenditures	1,440.000	13	46	8	Capital Expenditures	670.000	
Depreciation	1,330.000	16	43	7	Depreciation	758.000	
Cash Flow	3,172.000	20	102	17	Cash Flow	1,410.000	
<b>SEGMENT NAME:</b> Non-U.S. Exploration & Produ <b>SIC CODES:</b> 1311 1321				<b>SEGMENT NAME:</b> International Exploration <b>SIC CODES:</b> 1311 1321			
		<b>% OF</b>	<b>% OF</b>	<b>% OF</b>	<b>% OF</b>	<b>% OF</b>	
		<b>TOTAL</b>	<b>SALES</b>	<b>ASSETS</b>	<b>TOTAL</b>	<b>SALES</b>	
Sales	11,353.000	6	100	28	Sales	3,608.000	
Operating Income	4,044.000	51	36	10	Operating Income	360.000	
Assets	40,906.000	28	360	100	Assets	5,333.000	
Capital Expenditures	5,025.000	46	44	12	Capital Expenditures	1,273.000	
Depreciation	3,497.000	42	31	9	Depreciation	451.000	
Cash Flow	7,541.000	47	66	18	Cash Flow	811.000	
<b>SEGMENT NAME:</b> U.S. Refining & Marketing <b>SIC CODES:</b> 2911 @NA				<b>SEGMENT NAME:</b> United States Refining, Mark <b>SIC CODES:</b> 2911 2992			
		<b>% OF</b>	<b>% OF</b>	<b>% OF</b>	<b>% OF</b>	<b>% OF</b>	
		<b>TOTAL</b>	<b>SALES</b>	<b>ASSETS</b>	<b>TOTAL</b>	<b>SALES</b>	
Sales	43,376.000	24	100	317	Sales	3,597.000	
Operating Income	577.000	7	1	4	Operating Income	208.000	
Assets	13,699.000	9	32	100	Assets	3,714.000	
Capital Expenditures	830.000	8	2	6	Capital Expenditures	3.000	
Depreciation	697.000	8	2	5	Depreciation	3.000	
Cash Flow	1,274.000	8	3	9	Cash Flow	211.000	
<b>SEGMENT NAME:</b> Non-U.S. Refining & Marketin <b>SIC CODES:</b> 2911 @NA				<b>SEGMENT NAME:</b> International Refining, Mark <b>SIC CODES:</b> 2911 2992			
		<b>% OF</b>	<b>% OF</b>	<b>% OF</b>	<b>% OF</b>	<b>% OF</b>	
		<b>TOTAL</b>	<b>SALES</b>	<b>ASSETS</b>	<b>TOTAL</b>	<b>SALES</b>	
Sales	109,969.000	60	100	252	Sales	22,189.000	
Operating Income	650.000	8	1	1	Operating Income	370.000	
Assets	43,718.000	30	40	100	Assets	8,542.000	
Capital Expenditures	1,201.000	11	1	3	Capital Expenditures	375.000	
Depreciation	1,670.000	20	2	4	Depreciation	220.000	
Cash Flow	2,320.000	14	2	5	Cash Flow	590.000	
<b>SEGMENT NAME:</b> U.S. Chemicals <b>SIC CODES:</b> 2911 2824				<b>SEGMENT NAME:</b> Global Gas and Power <b>SIC CODES:</b> 5172 4613			
		<b>% OF</b>	<b>% OF</b>	<b>% OF</b>	<b>% OF</b>	<b>% OF</b>	
		<b>TOTAL</b>	<b>SALES</b>	<b>ASSETS</b>	<b>TOTAL</b>	<b>SALES</b>	
Sales	6,554.000	4	100	86	Sales	4,539.000	
Operating Income	738.000	9	11	10	Operating Income	-14.000	
Assets	7,605.000	5	116	100	Assets	1,297.000	
Capital Expenditures	600.000	6	9	8	Capital Expenditures	161.000	
Depreciation	402.000	5	6	5	Depreciation	65.000	
Cash Flow	1,140.000	7	17	15	Cash Flow	51.000	
<b>SEGMENT NAME:</b> Non-U.S. Chemicals <b>SIC CODES:</b> 2911 2824				<b>SEGMENT NAME:</b> Other Business Units <b>SIC CODES:</b> 6300 4991			
		<b>% OF</b>	<b>% OF</b>	<b>% OF</b>	<b>% OF</b>	<b>% OF</b>	
		<b>TOTAL</b>	<b>SALES</b>	<b>ASSETS</b>	<b>TOTAL</b>	<b>SALES</b>	
Sales	7,223.000	4	100	73	Sales	32.000	
Operating Income	616.000	8	9	6	Operating Income	-3.000	
Assets	9,831.000	7	136	100	Assets	365.000	
Capital Expenditures	1,093.000	10	15	11	Capital Expenditures	0.000	
Depreciation	274.000	3	4	3	Depreciation	1.000	



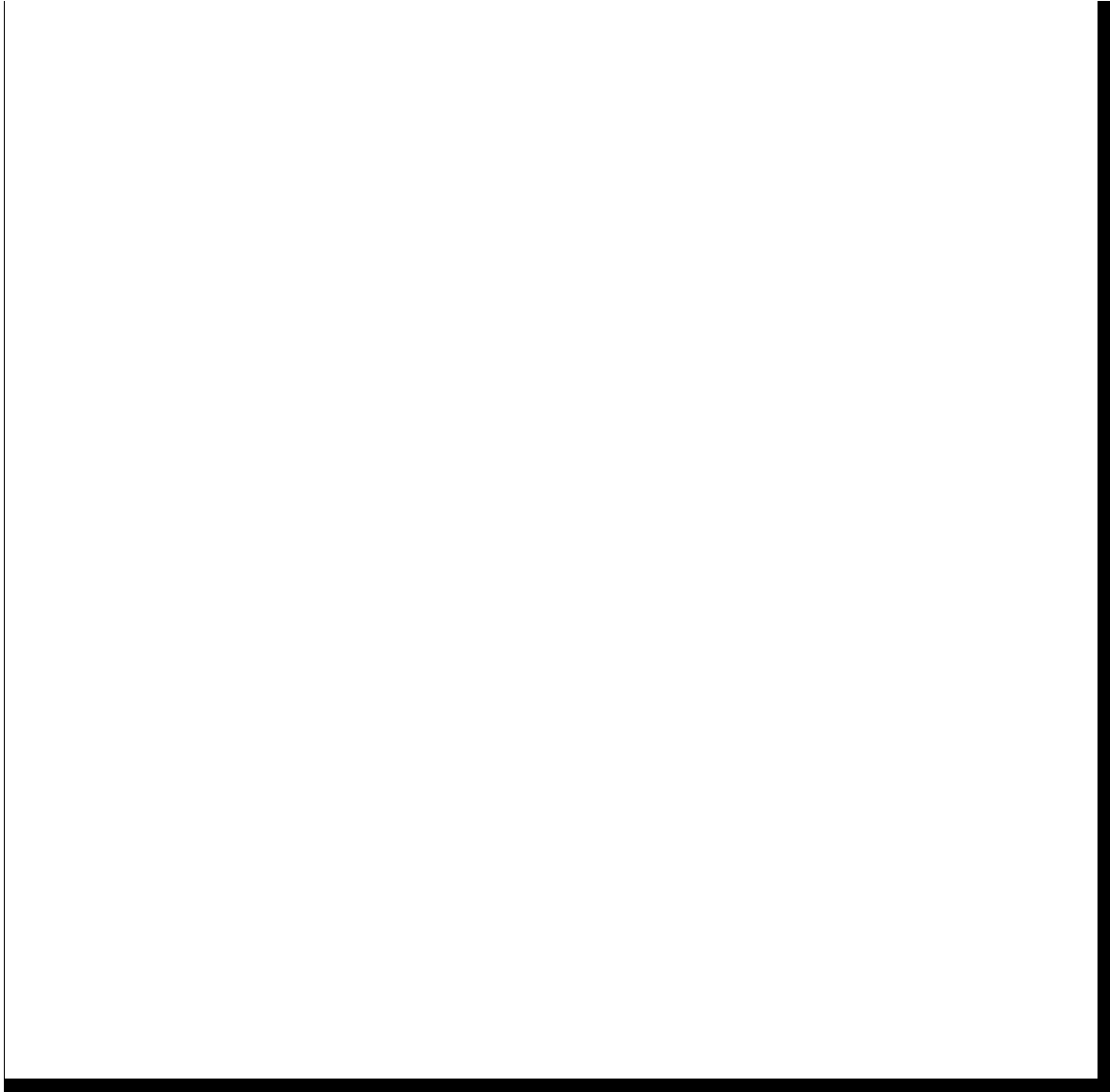
<b>CHEVRON CORP</b>					<b>ULTRAMAR DIAMOND SHAMROCK</b>				
TICKER: CHV					TICKER: UDS				
SIC: 2911					SIC: 2911				
Period Ended: Dec99					Period Ended: Dec99				
<b>SEGMENT NAME:</b> US Exploration and Production					<b>SEGMENT NAME:</b> Petrochemical/NGL				
<b>SIC CODES:</b> 1311 1321					<b>SIC CODES:</b> 5171 2911				
		<b>% OF</b>	<b>% OF</b>	<b>% OF</b>		<b>% OF</b>	<b>% OF</b>	<b>% OF</b>	
		<b>TOTAL</b>	<b>SALES</b>	<b>ASSETS</b>		<b>TOTAL</b>	<b>SALES</b>	<b>ASSETS</b>	
Sales	1,745.000	6	100	31	Sales	135.100	1	100	91
Operating Income	526.000	23	30	9	Operating Income	3.500	1	3	2
Assets	5,566.000	14	319	100	Assets	148.200	3	110	100
Capital Expenditures	710.000	14	41	13	Capital Expenditures	0.100	0	0	0
Depreciation	1,130.000	39	65	20	Depreciation	1.400	1	1	1
Cash Flow	1,656.000	32	95	30	Cash Flow	4.900	1	4	3
<b>SEGMENT NAME:</b> International Exploration an					<b>SEGMENT NAME:</b> Refining				
<b>SIC CODES:</b> 1311 2911					<b>SIC CODES:</b> 2911 5172				
		<b>% OF</b>	<b>% OF</b>	<b>% OF</b>		<b>% OF</b>	<b>% OF</b>	<b>% OF</b>	
		<b>TOTAL</b>	<b>SALES</b>	<b>ASSETS</b>		<b>TOTAL</b>	<b>SALES</b>	<b>ASSETS</b>	
Sales	3,587.000	11	100	26	Sales	7,967.600	72	100	240
Operating Income	1,093.000	49	30	8	Operating Income	358.600	84	5	11
Assets	13,748.000	34	383	100	Assets	3,326.500	67	42	100
Capital Expenditures	3,251.000	65	91	24	Capital Expenditures	75.300	41	1	2
Depreciation	851.000	30	24	6	Depreciation	168.200	70	2	5
Cash Flow	1,944.000	38	54	14	Cash Flow	526.800	79	7	16
<b>SEGMENT NAME:</b> United States Refining, Mark					<b>SEGMENT NAME:</b> Retail				
<b>SIC CODES:</b> 2911 1311					<b>SIC CODES:</b> 5541 @NA				
		<b>% OF</b>	<b>% OF</b>	<b>% OF</b>		<b>% OF</b>	<b>% OF</b>	<b>% OF</b>	
		<b>TOTAL</b>	<b>SALES</b>	<b>ASSETS</b>		<b>TOTAL</b>	<b>SALES</b>	<b>ASSETS</b>	
Sales	17,170.000	54	100	210	Sales	5,868.500	53	100	481
Operating Income	357.000	16	2	4	Operating Income	202.500	47	3	17
Assets	8,178.000	20	48	100	Assets	1,220.200	25	21	100
Capital Expenditures	515.000	10	3	6	Capital Expenditures	62.200	34	1	5
Depreciation	478.000	17	3	6	Depreciation	67.800	28	1	6
Cash Flow	835.000	16	5	10	Cash Flow	270.300	40	5	22
<b>SEGMENT NAME:</b> International Refining, Mark					<b>SEGMENT NAME:</b> Corporate				
<b>SIC CODES:</b> 2911 1311					<b>SIC CODES:</b> @NA @NA				
		<b>% OF</b>	<b>% OF</b>	<b>% OF</b>		<b>% OF</b>	<b>% OF</b>	<b>% OF</b>	
		<b>TOTAL</b>	<b>SALES</b>	<b>ASSETS</b>		<b>TOTAL</b>	<b>SALES</b>	<b>ASSETS</b>	
Sales	5,121.000	16	100	142	Sales	-2,895.900	-26	100	-1,201
Operating Income	74.000	3	1	2	Operating Income	-135.500	-32	5	-56
Assets	3,609.000	9	70	100	Assets	241.100	5	-8	100
Capital Expenditures	30.000	1	1	1	Capital Expenditures	47.300	26	-2	20
Depreciation	79.000	3	2	2	Depreciation	3.400	1	-0	1
Cash Flow	153.000	3	3	4	Cash Flow	-132.100	-20	5	-55
<b>SEGMENT NAME:</b> United States Chemicals									
<b>SIC CODES:</b> 2911 2821									
		<b>% OF</b>	<b>% OF</b>	<b>% OF</b>					
		<b>TOTAL</b>	<b>SALES</b>	<b>ASSETS</b>					
Sales	2,794.000	9	100	85					
Operating Income	44.000	2	2	1					
Assets	3,303.000	8	118	100					
Capital Expenditures	326.000	7	12	10					
Depreciation	174.000	6	6	5					
Cash Flow	218.000	4	8	7					
<b>SEGMENT NAME:</b> International Chemicals									
<b>SIC CODES:</b> 2911 2821									
		<b>% OF</b>	<b>% OF</b>	<b>% OF</b>					
		<b>TOTAL</b>	<b>SALES</b>	<b>ASSETS</b>					
Sales	750.000	2	100	81					
Operating Income	65.000	3	9	7					
Assets	923.000	2	123	100					
Capital Expenditures	59.000	1	8	6					
Depreciation	19.000	1	3	2					
Cash Flow	84.000	2	11	9					

## Line of Business Descriptions (CSEG)

### Description

This report presents business segment data in dollars and as a percentage of total company data for a single company.

GENERAL ELECTRIC CO		DESCRIPTION OF BUSINESS SEGMENTS				
TICKER: GE						
SIC: 3600						
GICS: 20105010						
FISCAL YEAR ENDED: Dec-99						
Business Segments	Segment SIC Codes		Segment Sales	% Of Total	Segment Oper Inc	% Of Total
Aircraft Engines	3724	3519	10,081.000	9	2,105.000	14
Appliances	3630	3585	5,667.000	5	655.000	4
Plastics	3089	2821	6,924.000	6	1,651.000	11
Technical Products and Servi	3845	4899	6,848.000	6	1,359.000	9
NBC	4833	7812	5,790.000	5	1,576.000	11
Power Systems	3511	3443	9,884.000	9	1,693.000	11
Industrial Products and Syst	3640	3670	11,025.000	10	2,095.000	14
GECS	6159	6141	55,749.000	50	4,443.000	30
Corporate	@NA	@NA	619.000	1	-843.000	-6



## Line of Business Principal Products and Customers (CSEGPROD)

### Description

This report presents principal product and customer data for up to ten segments for a single company for a single year.

Principal Products		Principal Product Sic	Principal Product Sales	Principal Customers	Principal Customer Sales	Sales To Government Domestic: Foreign:	
<b>NORTHROP GRUMMAN CORP</b> <span style="float: right;"><b>BUSINESS SEGMENT PRINCIPAL PRODUCTS AND CUSTOMERS</b></span> TICKER: NOC PRIMARY SIC: 3812 GICS: 20101010 PERIOD ENDING: Dec97							
Segment Name: ELECTRONICS							
Segment Sales: 4,059,000							
ELECTR COUNTERMEA		3812		384,000	BOEINGNGNg95T8002e858.000	ME	3,547,000 @CF
FOREIGN GOVT							
SURVEILLANCE AIRCFT		3812	1,073,000		@NA		
AIRBORNE RADAR		3812	668,000				
OTHER ELECTRONICS		3812	1,934,000		@NA		
Segment Name: AIRCRAFT							
Segment Sales: 4,092,000							
FA-18 FIGHTERS		3721	551,000	BOEINGNGNg95515e858.000		2,779,000 @CF	FOREIGN GOV
MJM		3721	858,000				
B-2		3721	1,615,000		@NA		
C-17 & OTHER		3728	1,068,000		@NA		
Segment Name: INFORMATION TECHNOLOGY & SVC							
Segment Sales: 1,002,000							
		@NA	@NA	BOEINGNGNg95515e858.000		884,000 @CF	FOREIGN GOV
		@NA	@NA		@NA		
		@NA	@NA		@NA		
		@NA	@NA		@NA		
ME	Sales to Principal Cust(s) is aggregate of all segments						

## SIC Code Classification of Company Activity (CSICALL)

### Description

This report presents a list of up to 90 SIC codes and descriptions assigned to each company for the most recent year.

SIC CODE CLASSIFICATION OF COMPANY ACTIVITY					
<b>GENERAL ELECTRIC CO</b>					
TICKER: GE					
PRIMARY SIC CODE: 3600					
ELECTR, OTH ELEC EQ, EX CMP					
GICS: 20105010					
Industrial Conglomerates					
<b>Headquarter Location:</b>					
3135 EASTON TURNPIKE					
FAIRFIELD CT 06431-0001					
Telephone Number: 203-373-2211					
SIC	SIC Code Description	SIC	SIC Code Description	SIC	SIC Code Description
3600	ELECTR, OTH ELEC EQ, EX CMP	2821	PLASTICS,RESINS,ELASTOMERS	3089	PLASTICS PRODUCTS, NEC
3443	FABRICATED PLATE WORK	3511	STEAM,GAS,HYDRAULIC TURBINES	3519	INTERNAL COMBUSTN ENGINE,NEC
3585	AIR-COND,HEATING,REFRIG EQ	3630	HOUSEHOLD APPLIANCES	3640	ELECTRIC LIGHTING, WIRING EQ
3670	ELECTRONIC COMP, ACCESSORIES	3724	AIRCRAFT ENGINE,ENGINE PARTS	3845	ELECTROMEDICAL APPARATUS
4833	TELEVISION BROADCAST STATION	4899	COMMUNICATIONS SERVICES, NEC	6141	PERSONAL CREDIT INSTITUTIONS
6159	MISC BUSINESS CREDIT INSTN	7812	MOTION PIC, VIDEOTAPE PRODTN		

## Notes